



Professional Woodworking Machine

CATALOGUE



ABOUT US

Weihai Huitong Hardware & Machinery Co., Ltd., established in 1999, proudly launched its own brand "WIPRO".

Leveraging a professional team, the company is dedicated to high quality products, excellent service and global sales. Company's extensive range of offerings includes Power Tools, pneumatic tools, Cutting Tools, Air Compressors, Welding Machines, Automotive maintenance Tools, Woodworking Machinery, Metal Working Machine and Accessories.

With exceptional product quality, innovative design, and the strong brand philosophy, "WIPRO" products have found their way into countless households, enhancing the quality of life.

The company remains steadfast in upholding the principles of sincerity, cooperation, respect, professionalism, and user-centric experience. "WIPRO" aims to deliver an impeccable one-stop service, offering solutions for various work needs and making life more enjoyable.



CONTENT

Mortiser	4	Table Saw	12
Bench Drill	5	Belt / Disc Sander	13
Wood Shaper.....	7	Sanding Machine	13
Wood Jointer	7	Blade Grinder	14
Thicknesser	8	Wood Lathe	15
Band Saw	9	Universal Woodworking Machine	16
Scroll Saw	11	Dust Collector	18

Mortiser



Model	MK361A
Code	46717
Chisel Capacity	6-16mm
Max. Mortising Depth	76mm
Drill Chuck Capacity	1.5-13mm
Max. Clamping Width	80mm
Chisel To Table(max)	130mm
Spindle To Fence(max)	65mm
Motor	220V 50Hz 550W 2860rpm
Travel In Front And Behind	50mm
Travel In Left And Right	180mm
Table Size	220x165mm
Base Size	245x310mm
Packing	1: 445x310x235mm 2: 505x310x215mm
Weight	52Kgs



MK361A



Mortiser



Model	MS3816CE
Code	00000
Chisel Capacity	6-16mm
Max. Mortising Depth	76mm
Drill Chuck Capacity	1-13mm
Chisel to Table (Max.)	110mm
Over Height	800mm
Motor(Input)	550W
Spindle Speed	2800rpm
Packing Size	670x450x340mm
G.W./N.W.	41/39kgs
Units/20' Container	258pcs



Model	MS3816WH
Code	000000
Chisel Capacity	6-16mm
Max. Mortising Depth	76mm
Drill Chuck Capacity	1-13mm
Chisel to Table (Max.)	140mm
Over Height	800mm
Motor(Input)	550W
Spindle Speed	2800rpm
Packing Size A Base Parts	440x320x200mm
G.W./N.W.	21/20kgs
Packing Size B Column Parts	500x375x220mm
G.W./N.W.	20/19kgs
Units/20' Container	258pcs



Model	MS36127A3
Code	000000
Chisel Capacity	6-12mm
Max. Mortising Depth	76mm
Drill Chuck Capacity	1-13mm
Chisel to Table (Max.)	110mm
Over Height	700-800mm
Motor(Input)	550W
Spindle Speed	2800rpm
Packing Size	570x310x280mm
G.W./N.W.	27/25kgs
Units/20' Container	616pcs

Mini Bench Drill



Model	BDM-65
Code	92217
Rated Voltage	220V~50HZ
Input Power	340W
No-Load Speed:	0~8000r/min
	0~11000r/min
	0~16000r/min
Drill clamping diameter	0.6~6.5mm
Max spindle travel	25mm

Model	BDM-100
Code	95573
Voltage	220V~50Hz
Power	450W
Clamp Diameter	Φ1-10mm
Max Drilling Depth	37mm
No-load Speed	0-2900r/min
Table Size	170x170mm
Drilling Capacity	Φ8mm in Steel Φ25mm in Wood

Model	BDM-130
Code	95574
Voltage	220V~50Hz
Power	580W
Clamp Diameter	Φ1.5-13mm
Max Drilling Depth	60mm
Speed(I/II/III)	0~1200/0~2200/0~3500r/min
Table Size	200x200mm
Drilling Capacity	Φ8mm Iron Φ30mm Wood

Bench Drill



Model	ZJ4113	ZJ4116	ZJ4125	ZJ4132
Code	61752	61753	61754	73908
Motor	230V 50Hz 350W	230V 50Hz 550W	230V 50Hz 750W	230V 50Hz 1100W
Max. Drill Capacity	13mm	16mm	25mm	32mm
Spindle Stroke	50mm	80mm	100mm	120mm
Spindle Taper	MT2	MT2	MT3	MT4
Column Diameter	46mm	70mm	80mm	92mm
Spindle Speed:	580-2650rpm(5 speeds)	210-2220rpm(12 speeds)	200~2600rpm	150~2020rpm
Max.Distance from Spindle axis to Surface of Column	104mm	169mm	215mm	226mm
Max.Distance from Spindle end to Surface of Table	200mm	390mm	725mm	590mm
Max.Distance from Spindle end to Surface of Base	290mm	640mm	1240mm	1177mm
Table Size	160×160mm	200×195mm	330×330mm	364×364mm
Base Size	314×200mm	250×434mm	560×340mm	625×372mm
Packing Size	440×335×225mm	800×490×275mm	1335×555×310mm	1435×635×327mm
N.W./G.W.	19/20Kgs	53/56Kgs	98/102Kgs	135/140Kgs

Bench Drill



WP130801



WP161001



WP161501



WP201704

Model	WP130801	WP161001	WP161501	WP201704	WP202002
Code	000000	000000	000000	000000	000000
Motor	220V~50/60Hz 300W	220V~50/60Hz 550W	220V~50/60Hz 550W	220V~50/60Hz 750W	220V~50/60Hz 1500W
Swing	208mm	252mm	390mm	430mm	515mm
Max. Drilling capacity	13mm	16mm	20mm	25mm	32mm
Taper	B16/JT33	B16/JT33	MT2	MT2/MT3	MT3
Spindle travel	50mm	60mm	80mm	80mm/120mm	120mm
Spindle Speed	5speed	12speed	12speed	16speed	12speed
Speed range 50Hz	500-2500rpm	230-2470rpm	180-2740rpm	160-3000rpm	200-1990rpm
Speed range 60Hz	620-3100rpm	280-3000rpm	250-3100rpm	200-3630rpm	260-2400rpm
Table Size	160X165mm	197X202mm	ø290mm	ø290mm	430x470mm
Base size	295X186mm	348x210mm	425X255mm	480X280mm	595x400mm
Column Diameter	ø46mm	ø59.5mm	ø70mm	ø80mm	ø92mm
Max. distance from spindle end to surface of table	215mm	406mm	435mm	680mm	705mm
Max. distance from spindle end to surface of base	295mm	525mm	685mm	1160mm	1190mm
Table Tilting Range	0-45°	0-45°	0-45°	0-45°	0-45°
Overall Height	580mm	840mm	1065mm	1635mm	1700mm
N.W./G.W.	13.8/15.7kg	22.9/24.9kg	50/54kg	67/72	129/135
Carton size	45.6X21.9X35cm	68x42x24cm	88.5x48.5x27.7cm	139.5x52x26cm	115x64.3x31/65x51.8x31.3cm

Woodworking Machine

Wood Shaper



WS-1/2A



WS-1-1/2

Model	WS-1/2A
Code	00000
Motor	Input:1HP
Table Size	610x480mm
Spindle Speed 50hz	11000rpm
Spindle Dia.	Φ1/2"
Mortising Lift Distance	22mm
N .W./G .W.	85/90Kgs
Overall Dimension	700x660x585mm

Model	WS-1-1/2
Code	72274
Motor	Input:3HP
Table Size	695x555mm
Spindle Speed 50hz	3500or7000rpm
Spindle Dia.	Φ30mm
Mortising Lift Distance	90mm
N .W./G .W.	190/216Kgs
Overall Dimension	760x610x1140mm

Wood Jointer



Model	WJ-150	WJ-200
Code	61588	61589
Table Size	1015x245mm	1315x395mm
Cutterhead Dia.	Φ61mm	Φ65mm
Number of Knives	3PCS	3pcs
Speed	4400rpm/50Hz	4400rpm/50Hz
Fence Size	875x98mm	875x98mm
Fence Tilt	45°-90°	45°-90°
Cutting Width	153mm	203mm
Cutting Depth	12.7mm	12.7mm
Cutting Rabbeting	12.7mm	12.7mm
Motor	Input 1HP	Input 1.5HP
Weight	84Kgs	130Kgs

Wood Jointer



Model	WJ-150A	WJ-200A	WJ-205
Code			111301
Power	Input: 1HP	Output: 2HP	Output: 2HP
Table Size	1215x184mm	1550x230mm	1800x230mm
Rotary Speed	4400rpm/50Hz	4400rpm/50Hz	4800rpm/50Hz
Blade	3 pcs	3 pcs	4 pcs
Diameter of axle	φ61mm	φ65mm	φ75mm
Main Body(G.W./N.W.)	74kgs/85kgs	105kgs/121kgs	145kgs/163kgs
Support (G.W./N.W.)	31kgs/32kgs	37kgs/38kgs	37kgs/38kgs
Packing Size	L1240xW370xH300mm L420xW400xH650mm	L1570xW440xH300mm L560xW440xH650mm	L1860xW440xH300mm L560xW440xH650mm
Q'ty of 20ft container	100 pcs	70 pcs	64 pcs

Thickener



Model	MB104C	MB105C
Code	33718	72298
Table Size	655x490mm	655x590mm
Cutter Head Dia.	Φ72mm	Φ72mm
Number of Knives	3or4pcs	3or4pcs
Speed	5270rpm	5270rpm
Cutting Width	400mm	500mm
Cutting Depth	4mm	4mm
Cutting Lift Distance	150mm	150mm
Motor Power	2.2KW	2.2KW
N.W/G.W	170Kgs/200Kgs	190Kgs/225Kgs
Overall Dimension	670x650x849mm	770x650x849mm

Heavy-duty Single-sides thickener



Model	MB104H	MB105H	MB106H
Code			60002615
Max. planing width	400mm	500mm	600mm
Max. planing thickness	200mm	200mm	200mm
Min. planing Length	210mm	210mm	210mm
Max. planing depth	4mm	4mm	4mm
Spindle speed	5000r/min	5000r/min	5000r/min
Motor Voltage	380V/50Hz	380V/50Hz	380V/50Hz
Motor power	4KW	4KW	5.5kw
Feeding speed	6.8m/min	6.8m/min	6.8m/min

Double side Thickener



Model	MB202B	MB203B
Max.planing width	200mm	300mm
Max.planing thickness	150mm	150mm
Max.planing quantity	4mm/2mm	4mm/2mm
Max.planing length	170mm	170mm
Feeding speed	9.2/7.5m/min	9.2/7.5m/min
Spindle speed	8000r/min	8000r/min
Motor power	3KW/380V/50HZ/3PH	2×2.2KW/380V/50HZ/3PH

Model	MB204B	MB206B
Max.planing width	400mm	600mm
Max.planing thickness	150mm	150mm
Max.planing quantity	4mm/2mm	4mm/2mm
Max.planing length	170mm	170mm
Feeding speed	9.2/7.5m/min	9.2/7.5m/min
Spindle speed	8000r/min	8000r/min
Motor power	2×3KW/380V/50HZ/3PH	2×4KW/380V/50HZ/3PH

One Side Thicknesser



Model	MB15"
Max.planing width	380mm
Max.planing thickness	200mm
Thickness of workpiece	160mm
Max.planing depth	3mm
Arbor speed	4500rpm
Feeding speed	6.9m/min
Motor power	2.2KW/380V

Model	MB16"
Max.planing width	400mm
Max.planing thickness	200mm
Thickness of workpiece	160mm
Max.planing depth	3mm
Arbor speed	4500rpm
Feeding speed	6.9m/min
Motor power	2.5KW/380V

Band Saw



JDD160/JDD200



JDD240II

Model	JDD160	JDD200	JDD240II
Code	61925	00000	91249
Motor	220V/50Hz,250W	220V,50Hz,350W	220V,50Hz,350W
Blade Speed	12.1m/s	13.7m/s	11.5m/s
Max.Cutting Depth	40mm	80mm	80mm
Max.Cutting Width	150mm	190mm	230mm
Table Size	240x200mm	300×300mm 290×290mm	305×305mm
Table Tilting Range	0°~45°	0°~45°	0°~45°
Balde Length	1085mm	1425mm	1575mm
Blade Width	3.5mm	6.35mm	6.35mm
Blade Teeth	15TPI	6TPI	6TPI
Blade Thickness	0.3mm	0.3mm	0.3mm
Packing Size	310x250x580mm	365×285×710mm	786×456×293mm
G.W./N.W.	10.5/12Kgs	19/17Kgs	19/17Kgs

Band Saw

The machine is suitable for cutting wood, wood-derived materials and plastics.
 Do not cut round stock transverse to its longitudinal axis without suitable jigs or fixtures.
 The rotating saw blade could turn the workpiece.
 When sawing thin stock layed on edge, a suitable guide must be used for firm support.



Model	JDD315
Code	111619
Throat(mm)	306mm
Power	220V~50Hz
Motor(w)	750W
No Load Speed	1400rpm
Max.cutting height(mm)	160mm
Blade speed 50Hz(m/s)	370x800m/min
Blade length(mm)	2240mm
Table size(mm)	400x480mm 0-45°
Q'ty	1Unit
Weight	60kgs
Packing Size	133x55x48cm



Band Saw

The machine is suitable for cutting wood, wood-derived materials and plastics.
 Do not cut round stock transverse to its longitudinal axis without suitable jigs or fixtures.
 The rotating saw blade could turn the workpiece.
 When sawing thin stock layed on edge, a suitable guide must be used for firm support.



Model	BA-350W
Code	108271
Voltage	220 V/50Hz
Power	1100W
Blade Line Speed	8/14 m/s
Table Size	548x400mm
Table pivot capacity	0-45°
Band saw blade Size	2420x12.5x0.5mm 4T
Max. Cutting Height	160mm
Max. Cutting Width	345mm
N.W./G.W.	80/83Kg
Meas.	133x55x48cm



Scroll Saw

Model	MQ5011
Code	60003499
Motor	220V/50Hz,85W
Speed	1450rpm
Max.cutting Depth	50mm
Max.cutting Width	410mm
Table Size	375×250mm
Table Tilting Range	0-45°
Blade Length	133mm
Blade Width	2.6mm
Blade Teeth	18TPI
Blade Thickness	0.25mm
Exterior Size	580x280x340mm
Packing Size	592x283x330mm
G.W./N.W.	13/11.5kgs
Loading Amount	524pcs/20'



Scroll Saw

Model	SSA16
Code	67894
Motor	220V 50Hz,90W
Speed	550-1600rpm
Max.Cutting Depth	52mm(0°),20mm(45°)
Max.Cutting Width	406mm
Table Size	414×254mm
Table Tilting Range	0-45°
Blade Length	127mm
Blade Width	2.6mm
Blade Teeth	18TPI
Blade Thickness	0.25mm
Weight	14/15kgs



Scroll Saw



Model	SSA22V
Code	00000
Power	220V/50Hz S1 80W,S2 15Min 120W
Max. cutting depth	50mm(at 0°) , 20mm(at 45°)
Max. cutting size	558mm
Speed	550~1550s/min
Table size	650×350mm
Table tilt	Left:0~45°,Right:0~30°
Blade size	133×3×0.5mm
N.W./G.W.	30/33.5kgs
Carton size	1005×435×475mm



Table Saw



Model	MJ10200-45°
Code	85357
Motor	800W,220V~50Hz
No load speed	2950rpm
TCT blade	200x15.9x2.4mm , 20T
Max depth of cut at 90°	40mm
Max. Depth of cut at 45°	25mm
Blade Tilting Range :	0-45°
Table size	500x337mm
Exterior Size :	550x337x270mm
Packing Size :	550x360x285mm
G.W/N.W	12/10kg

Table Saw

Right & Left extension table-steel plate
Rear extension table-steel Plate



Model	MAHONI-250
Code	105108
Rated Voltage	220v~50Hz
Rated Power	1500W
No.Load Speed	5700rpm
Table Size	445x640mm/930x965(with extension table)
Blade Tilting Range	0-45°
Max. Cutting Capacity at 90°	73mm
Max. Cutting Capacity at 45°	48mm
TCT Blade	Ø250xØ30x2.4 24T
N.W./G.W.	22/24kgs
Packing Size	730x590x330mm

Table Saw



Model	MJ10315
Code	75849
Motor	220V~50Hz 2000W
No load speed	2800rpm
TCT blade	315x30x3.0mm 40T 5000rpm
Max. Depth of cut at 90°	85mm
Max. Depth of cut at 45°	46mm
Blade Tilting Range :	0-45°
Blade Rising Range :	0-85mm
Table size	800x550mm
Exterior Table size	800x400mm
Exterior Size :	1600x683x852mm
Packing Size :	860x610x460mm
G.W/N.W	58/54kg

Belt / Disc Sander



MODEL		MM491G
Code		60421
Motor		220V~50Hz/60Hz 1/2HP
Speed(rpm)	50Hz	2850rpm
	60Hz	3450rpm
Disc Size		6"
Belt Size		4"×36"
Side Table		226×160mm
Base		Iron
N.W./G.W.		19/21Kgs



Model	MM4123
Motor	220V, 50Hz 750W 2950rpm
Belt Size	150 x 1220mm
Disc Size	Φ230mm
Table Size	314x 157mm
Belt Speed	5.3m/s
Table Tilting Range	0 - 45 °
Packing Size	705×385×445mm
N.W./G.W.	52/49Kgs

Sanding Machine

Model	MM493C
Code	00000
Power	220V/50HZ S1 250W
Motor Speed	22980rpm
Disc Size	125mm
Disc Paper Grit	80#
Belt Size	25.4×762mm
Belt Grit	100#
Belt Speed	860m/min
Table Tilt	0~45°
Table Size mm	Disc:170×95mm,Belt:145×145mm
N.W./G.W.: kg	7.8/9kgs
Carton Size mm	450×315×330mm



Straight Blade Grinder

Without Bench Grinder

Model	MF206
Code	62368
Max.length Of Blade	650mm
Max. Clamping Thickness	8mm
Wheel Size	Φ200xΦ16x20mm
Motor Power	0.75Kw/220V
Overall Dimension	725X500X325mm
Net Weight	48Kgs



Saw Blade Grinder

Model	WP306
Stipulation	Φ125x10xΦ32x8mm
Angle of Grinding Blade	±20°
Angle of Rotation Frame	-30°+45°
Diameter of Grindable Saw	80-700mm
Power	220V/50Hz,250w
Speed	2850rpm
Overall Dimension	720x430x300mm
Weight	35Kgs



Precise Mini Wood Lathe

The products are widely used in drilling, Aluminium, wood,circuit boards, arts and crafts, document binding, teaching, model manufacture, plastic products, rubber, glass, organic glass, metal hole, etc
This woodworking lathe is a DIY helper. For the production of a large number of wooden models, such as plates, cups, plates, buckets, puppets, dolls and a variety of needs round car wooden goods

Model	MCS-300
Code	107633
Voltage	220VAC
Power	480W
Motor Speed	580-3500r/min
Spindle	M14 x 1
Max diameter	40 mm
Max Length	300 mm
Base sliding distance	220mm
Weight	6.05Kg (Contains Accessories)
Q'ty/Box	1Unit
Meas.	67x39.5x18CM
Q'ty/Ctn	2Units



Wood Lathe

Model	MCS1000
Code	68042
Motor	220V/50Hz500W
Max. Cutting Dia.	350mm
Max. Cutting Length	1000mm
Spindle Speed	810/1180/1700/2480rpm
Exterior Size	1471X245X340mm
Packing Size	1490X225X145/365mm
N .W/G .W.	30/34Kgs



Wood Copy Lathe

Model	MCF1000
Code	60002968
Motor Power	550W
Swing	350mm
Centre Height	175mm
Working Length	1000mm
Disc Dia.	Ø 204 mm
Table Size	225 x 155 mm
Speed Change	3
Speed 50Hz/60Hz	750-2600/890-3050r/min
Weight	77Kgs
Packing Dimensions	1450 × 380 × 420 mm

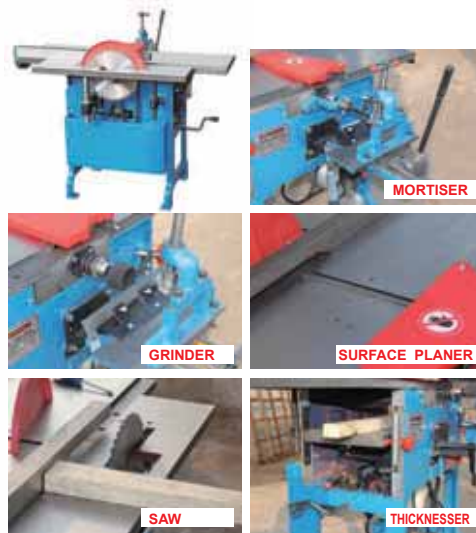


Woodworking Machine

Universal Woodworking Machine



EMQ-442A



MORTISER

GRINDER

SURFACE PLANER

SAW

THICKNESSER



EMQ-443



MORTISER

GRINDER

SURFACE PLANER

SAW

THICKNESSER

Model	EMQ-442A	EMQ-443
Code	84751	84750
Max.planing Width	260mm	300mm
Max.planing Capacity	3mm	3mm
Sawing Thickness	80mm	80mm
Press-planing Thickness	6~120mm	10~120mm
Press-planing Length	150	130mm
Press-planing Feeding Speed	8.5m/min	8.5m/min
Motor (220V/50Hz)	1.5Kw	2.2Kw
Spindle Speed	3500r/min	3500r/min
Weight	180kgs	200Kgs

Universal Woodworking Machine



- MORTISER
- GRINDER
- SURFACE PLANER
- SAW
- THICKNESSER

Model	MQ443A
Code	60145
Max. planing Width	300mm
Max. planing Capacity	3mm
Sawing Thickness	80mm
Press-planing Thickness	10~120mm
Press-planing Length	130mm
Press-planing Feeding Speed	10m/min
Motor	220V~50Hz 1.5 or 2.2Kw
Spindle Speed	3500r/min
Weight	255Kgs

Universal Woodworking Machine



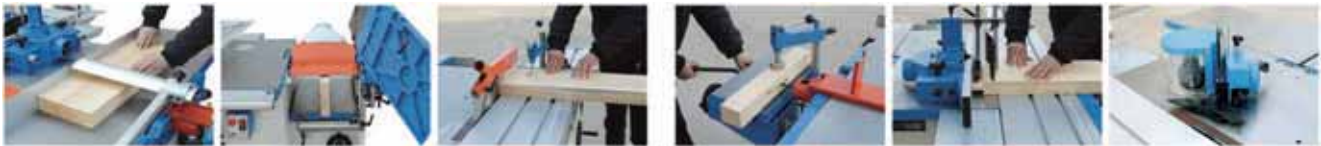
MJX6115

1.1 Round Saw		1.2 Moulder		With shaping hood	Max. rotating dia. Φ140mm
Saw blade dia	Φ305mm	Moulder arbor dia.	Φ30mm	Dust outlet dia	Φ100mm
Saw arbor rotate speed	3500r/min	Max. shaft protrusion above table	115mm	Motor power	2.2kW 220V 50Hz
Saw arbor dia	Φ30mm	Useful shaft working length	85mm	Square table size (crosscutting or rabbet cutting)	530 × 700mm
Arbor stopping time	≤9s	Tool rotating dia. below the table surface	Max. Φ140mm	1.3 Scorer	
Max. sawing thickness (with protective hood)	In vertical position :90mm In 45° position :65mm	Max depth of retractable tool below the table surface	40mm	Blade size	Φ90 × Φ 20×3mm
Max. crosscutting width	1250mm	Spindle rotating speed	1750/3500/6700r/min	Rotating speed	7000r/min
Sawing dust outlet mouth	Φ100mm	Spindle stopping time	≤9s	N.W	252kg
Saw up hood outlet mouth	Φ36mm	With moulder guide hood	Max. rotating dia. Φ180mm	Overall dimension	1800×2500×1170mm
Sliding Table	1.5m×310mm	Dust outlet dia	Φ100mm		
Motor power	2.2kW 220V50Hz				

Universal Woodworking Machine



ML410



1.1 Surface planing		Max. cross cut width	2800mm
Arbor cutting diameter	Φ74mm	Suction collector	Φ100mm
Arbor speed	5400r/min	Motor power	2.2kW 220V 50Hz
Knives specification	410×30×3mm	1.4 Moulder	
Max. planing width	400mm	Shaft diameter	Φ30mm
Total length of tables	1700mm	Max. shaft protrusion height from table	115mm
Max. removal	3mm	Shaft stop time	≤9sec
Shaft stop time	≤9sec	Useful shaft working length	85mm
Fence tilting	90°, 45°	Tool retractable to table underside	Max.Φ140mm
Motor power	2.2kW 220V 50Hz	Max. height of retractable tool	40mm
Suction collector	Φ120mm	Spindle rotation speed	1750r/min or 3500r/min or 6700r/min
1.2 Thickness planing		Use vertical milling guide hood:	
Max. planing width	400mm	Cutter rotate Max. diameter	Φ 180mm
Available planing thickness	6~240mm	Suction pipe diameter	Φ100mm
Max. removal	3mm	Use shaping hood:	
Minimum working length	130mm	Cutter rotate Max. diameter	Φ140mm
Feeding speed	7.5m/min	Suction pipe diameter :	
Suction collector	Φ120mm	Motor power	2.2kW 220V 50Hz
1.3 Circular saw		Square table size (for cross cutting or tenon milling)	520 × 1080mm
Sliding Table	2.5m×310mm	1.5 Scorer Blade specification	MVF-100-24 (Φ22mm) or MVF-120-24 (Φ22mm)
Saw blade dia	Φ305mm	Rotate speed	7000r/min
Arbor diameter	Φ 30mm	1.6 Drilling	
Blade speed	3500r/min	Drilling diameter	Φ16mm
Shaft stop time	≤9sec	Max. drilling depth	80mm
Max. cut height (with guard)		1.7 The others	1.7 The others
At vertical position	90mm	Machine weight	755kg
At 45° position	45mm	Overall dimension	3290×2500×1130mm

Dust Collector

Model	YJL230M
Code	60002965
Motor	750W/220V/50hz
Fan Dia.	230mm
Inlet Dia.	100 mm
No. of Intake Holes	1×100
Air speed 50 Hz	500CFM/14.15m ³ /min
Air speed 60 Hz	
Bag Dia.	
Bag Height	
Bag Volume	0.056m ³
N.W./G.W.	25/28kgs
Packing Size	420×350×320mm



YJL230M

Dust Collector-Portable

Wall mounted function; Portable design

Model	PDP-131
Code	86520
Motor	220V 50Hz 750W
Fan Diameter	228MM
Air Flow	500CFM
Air pressure	5.8 in. H2O
Dust Bag	3.1cu.ft; 5 microm
Hose Size	4"
Carton Size	530x430x565mm
G.W.	22kgs



PDP-132

1. with Casters; 2. TEFC motor;
3. 2 micron dust bag

Model	PDP-132
Code	86521
Motor	220V 50Hz 750W
Fan Diameter	236MM
Air Flow	545CFM
Air pressure	7 in. H2O
Dust Bag	2.23cu.ft; 2 microm
Hose Size	4"
Carton Size	465x400x420mm
G.W.	25kgs

PDP-131

1. TEFC motor; 2. 5microm dust bag;
3. Hose support and handle; 4. High quality



Dust Collector

Dust Collector is designed to capture dust and wood chips from woodworking machines, such as table saws, jointers, and planers. The air drawn in by the dust collector is filtered before it returns to the workspace.

The steel base has been fitted with casters for mobility in your garage or shop.

Model	PDP-200
Code	114571
Voltage	220V~50Hz
Power	1500W
Motor Speed	2850rpm
Inlet	100mmx2
Flux	2000m ³ /h
N.W./G.W.	36/40kgs
Packing Size	90.5x56.5x57cm
Q'ty/20' Container	96Units





WEIHAI HUITONG HARDWARE & MACHINERY Co., Ltd.

Unit 1201~1202, Jinhou Business-BLDG.,
No.109C, Xinwei Road Weihai City, CHINA

Tel: +86-631-5300306, 5300706

Fax: +86-631-5300809, 5321935

www.chinawipro.com www.htong-tools.com

E-mail: sales@htong-tools.com · pure@htong-tools.com